



PRODUCTS GUIDE





ABOUT JETWAY

With over 25 years of expertise in small kitchen appliances, JETWAY is a global manufacturer exclusively focused on maternal & infant products. Renowned for custom solutions, uncompromising quality, robust productivity, and global trade proficiency, the company stands out with core strengths including: specialized custom ODM/OEM services tailored to brand-specific designs, functions, and packaging while adapting to regional standards; top-tier quality assurance featuring BPA-free materials, anti-scald designs, strict quality control, and a 99.9% qualification rate; strong production capabilities supported by a 10,000 m² facility with dedicated lines, ISO9001 certification, and the flexibility to handle both small-batch and mass custom orders; and proven global trade prowess, serving over 200 brands worldwide, mastering international regulations, and achieving a 98%+ on-time cross-border delivery rate.



PRODUCTION WORKSHOP



PRODUCTION PROCESS



Product R&D



Metal Stamping



Injection



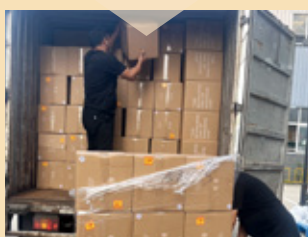
Packaging



Aging test



Assembly



Delivery



Warehouse



EXHIBITIONS



ITEM/RECORD

目 / 录

1.Baby Bottle UVC Sterilizer

XD-13 - - - - - 07

XD-08 - - - - - 07

XD-11 - - - - - 08

XD-16 - - - - - 08

4.Electric Food Chopper

AMG-1200 - - - - 17

AMG-1800 - - - - 17

AMG-A6300 - - - - 18

AMG-B1300 - - - - 18

AMG-C250 - - - - 19

2.Baby Bottle Steam Sterilizer

MY-01 - - - - - 10

MY-02 - - - - - 10

YD-105 - - - - - 11

5.Portable Bottle Warmer

XP-W09D-A - - - - 21

XP-W09B-C - - - - 21

XP-W17C-D - - - - 22

3.Electric Thermo Pot

AGP-30C1 - - - - 13

AHP-50A9 - - - - 13

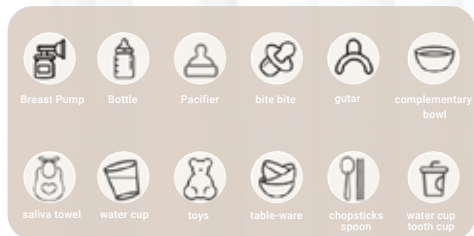
AHP-251A - - - - 14

AHP-431 - - - - 14

AHP-551 - - - - 15

AHP-3055 - - - - 15

Baby Bottle UVC Sterilizer



XD-13



Mode :

UVC

Material :

PP Housing

Food-Grade PP Inner Liner

Stainless Iron Shelf

Function :

1.6 Functions Modes: Auto, Dry, Sterilization, Clothing Sterilization, Toy Sterilization, Storage

2.PTC Drying System

3.24/72-Hour Smart Safe Storage

Capacity	Voltage/Power	Product Size (mm)	N.W. (kg)	G.W. (kg)
22L	220V/175W	280*270*450mm	3.00	4.40

XD-08



Mode :

UVC

Material :

PP Housing

Food-Grade PP Inner Liner

Stainless Iron Shelf

Function :

17 Functions Modes: Lighting, Auto, Drying, Toy Sterilization, Clothing Sterilization, Sterilization, Storage

2.PTC Drying System

3.72-Hour Smart Safe Storage

Capacity	Voltage/Power	Product Size (mm)	N.W. (kg)	G.W. (kg)
22L	220V/175W	280*270*405mm	3.67	4.60

XD-11



Mode :
UVC

Material :
PP Housing
Stainless Steel Inner Liner
Ferritic Stainless Steel Shelf

Function :
1.4 Function Modes: Auto (Dry + Sterilize) ,
Dry ,Sterilize , Storage
2.Drying Function (60°C-70°C)
3.24-hour Smart Safe Storage

Capacity	Voltage/Power	Product Size (mm)	N.W. (kg)	G.W. (kg)
22L	220V/175W	280*270*450mm	3.40	4.30

XD-16



Mode :
UVC

Material :
PP Inner Liner
PP Housing
GPPS Transparent Cover
Stainless Steel Bracket

Function :
1.4 Function Modes: Auto Dry + Sterilize, Dry ,
Sterilize , Storage
2.65°C Hot Air Drying (60min)
3.24-hour Antibacterial Storage

Capacity	Voltage/Power	Product Size (mm)	N.W. (kg)	G.W. (kg)
8L	220V/150W	Diameter: 250mm Height: 317mm	1.20	1.80

Baby Bottle Steam Sterilizer

One-Touch Operation

Sterilization For Baby's Daily Items

Large Capacity



MY-01



Mode :

Steam

Material :

Food-Grade PP Lid

Food-Grade PP Housing

Function :

1.5 Function :Sterilization, Drying, Milk Warming, Defrosting, Steaming.

2.Independent 360° Hot Air Drying

3.Milk Warming/Defrosting:Default: 45°

(Adjustable 30-90°C), 24-Hour Heat Preservation

4.Smart Steaming (Heats To 99°C, Default 20 Minutes, Adjustable 1-99 Minutes)

Capacity	Voltage	Power	Product Size (mm)	N.W. (kg)	G.W. (kg)
8L (4 Bottles)	220V	Sterilization/Warm:300W Drying: 200W	230*170*380mm	1.30	1.80

MY-02



Mode :

Steam

Material :

Food-Grade PP Lid

Food-Grade PP Housing

Function :

1.5 Function :Sterilization, Drying, Milk Warming, Defrosting, Steaming

2.Independent 360° Hot air Drying

3.Milk warming/Defrosting:Default: 45°

(Adjustable 30-90°C), 24-Hour Heat Preservation

4.Smart Steaming (Heats to 99°C, Default 20 Minutes, Adjustable 1-99 Minutes)

Capacity	Voltage	Power	Product Size (mm)	N.W. (kg)	G.W. (kg)
6L (4 Bottles)	220V	Sterilization/Warm:300W Drying: 200W	200*160*320mm	0.97	1.20

YD-105



Mode :

Steam

Material :

Food-Grade PP Lid

Food-Grade PP Housing

Function :

1.4 Function Modes :Sterilization+Drying, Milk Warming, Defrosting, Steaming

2.Independent 360° Hot Air Drying

3.Milk Warming/Defrosting:Default: 45° (Adjustable 30-90°C), 24-Hour Heat Preservation

4.Smart Steaming (Heats To 99 ° C, Default 20 Minutes, Adjustable 1-99 Minutes)

Capacity	Voltage	Power	Product Size (mm)	N.W. (kg)	G.W. (kg)
6L (4 Bottles)	220V	Sterilization/Warm:300W Drying: 200W	200*160*320mm	0.97	1.20



Electric Thermo Pot

Precise Temp Control With Accurate Pouring
Support Color Customization



AGP-30C1



Material :

Plastic Outer Case With Handle

Glass Inner Pot

Function :

- 1.Safety Child Lock
- 2.Touch Control Panel
- 3.Keep Warm Temp. Setting From 30°C To 95°C, And Room Temp.
- 4.Water Yield Setting: 30ml/40ml/50ml/...500ml
- 5.Water Outlet Light
- 6.Dry-boiling Safety Protection
- 7.Reboil Function

Capacity	Voltage	Power
3L Custom	100-120V~/220-240V 50HZ/60HZ	1200-1430W

AHP-50A9



Material :

Plastic upper cover

Tinplate Shell

304 Stainless Steel Inner Pot

Function :

- 1.Two Ways Of Water Dispense:
Electric Pump & Cup Touch
- 2.Re-Boil Function
- 3.Anti-Dry Boil Function
- 4.Variable Temperature Selection
- 5.Timer Setting:2/4/6/8/10/12
/14/16/18/20/22/24 Hours
- 6.Led Display

Capacity	Voltage	Power
6L (4.0/4.5L/5.0L /Custom)	120V 60HZ 750W 220-240V 50-60HZ	750-890W/1200-1430W

AHP-251A



Material :

Plastic upper cover
Tinplate housing
Stainless Steel Inner Pot

Function :

- 1.1 way of water dispense: Air Pressure pump
- 2.Keep warm: 80-90°C
- 3.Anti-dry boil function
- 4.Safety Lock: Air pump lock

Capacity	Voltage	Power
2.5L Custom	220-240V 50-60Hz	600W

AHP-431



Material :

Tinplate Coating Housing
Stainless Steel Inner Pot

Function :

- 1.2 Ways Of Dispensing Water: Electric Pump & Cup Touch Switch
- 2.Re-Boil Function
- 3.Keep Water Warm At 75-90°C
- 4.Dry-Boiling Safety Protection
- 5.Powerful Electric Pump
- 6.Clear Water Gauge

Capacity	Voltage	Power
4.3L (5.5L /custom)	220-240V 50/60HZ	750-890W

AHP-551



Material :

Tinplate Coating Housing
Stainless Steel Inner Pot

Function :

1. 2 Ways Of Dispensing Water: Electric Pump & Cup Touch Switch
2. Re-Boil Function
3. Keep Water Warm At 75-90°C
4. Dry-Boiling Safety Protection
5. Powerful Electric Pump
6. Clear Water Gauge

Capacity	Voltage	Power
5.5L (4.3L /custom)	220-240V 50/60HZ	750-890W

AHP-3055



Material :

Tinplate Coating Housing
Stainless Steel Inner Pot

Function :

1. 3 Ways Of Dispensing Water By Electric Pump, Cup Touch Switch And Air Pump
2. Re-Boil Function
3. Keep Water Warm At 75-90°C
4. Wide And Clear Water Gauge
5. Powerful Electric Pump
6. Dry-Boiling Safety Protection
7. Air Pump Lock

Capacity	Voltage	Power
3.0L (3.5L /4.6L/custom)	220-240V 50/60HZ	750-890W

Electric Food Chopper

Tiny Food Chopper Big Help for
Small Kitchen Tasks



AMG-1200



Material :

- 1.Copper / CCA Motor
- 2.Plastic Jar & Plastic Motor Cover
- 3.PP / PC Plastic Bowl Cover
- 4.420 Stainless Steel Blades

Function :

Mince Meat / Vegetable
One Speed

Capacity	Voltage/Power	Product Size (cm)
1.2L	220VAC 50HZ 250W	17x17x25.3cm

AMG-1800



Material :

- 1.Copper / CCA Motor
- 2.Plastic Motor Cover
- 3.420 Stainless Steel Blades
- 4.Plastic Jar /304 Stainless Steel Bowl

Function :

Mince Meat / Vegetable
One Speed

Capacity	Voltage/Power	Product Size (cm)
1.8L	220VAC 50HZ 250W	20.5x20.5x24cm



AMG-A6300



Material :

- 1.Copper / CCA Motor
- 2.Glass Bowl/304 Stainless Steel Bowl
- 3.Plastic Motor Cover
- 4.PP / PC Plastic Bowl Cover
- 5.420 Stainless Steel Blades

Function :

Mince Meat / Vegetable
Two Speed

Capacity	Voltage/Power	Product Size (cm)
1.8L	220VAC 50HZ 250W/300W	20.5x20.5x24cm

AMG-B1300



Material :

- 1.Copper / CCA motor
- 2.Glass Bowl/304 Stainless Steel Bowl
- 3.Plastic Motor Cover
- 4.PP / PC Plastic Bowl Cover
- 5.420 Stainless Steel Blades

Function :

Mince Meat / Vegetable
Two Speed

Capacity	Voltage/Power	Product Size (cm)
1.8L	220VAC 50HZ 250W/300W	20.5x20.5x24cm

AMG-C250



Material :

- 1.Copper / CCA Motor
- 2.Glass Bowl/304 Stainless Steel Bowl
- 3.Plastic Motor Cover
- 4.PP / PC Plastic Bowl Cover
- 5.420 Stainless Steel Blades

Function :

Mince Meat / Vegetable
Two Speed

Capacity	Voltage/Power	Product Size (cm)
1.8L	220VAC 50HZ 250W/300W	20.5x20.5x24cm

Structure Diagram



Portable Bottle Warmer

Maternal & Infant Grade Material

Dual Heat Modes: plugged-In/Wireless

Smart $\pm 1^{\circ}\text{C}$ Adjustable



XP-W09D-A



Mode :

AC+DC

Material :

Inside:SUS316

Outside:SUS304

Lid Cover:SUS304

Function :

- 1.AC Mode Heats Water To 100°C(6min)
- 2.DC Mode Warms Milk In 4min, heats Up To 55°C When Full
- 3.±1 ° C Precise Temperature Control (37°C -55°C) And 5 Quick-select Gears

Capacity	AC /DC Power	Battery Capacity	Product Size (mm)	N.W. (kg)	G.W. (kg)
0.55L	220V 500W 11.1V 100W	12000mAh	Φ90x270mm	0.8	0.9

XP-W09B-C



Mode :

DC boils up to 100°C

Material :

Inside:SUS316

Outside:SUS304

Lid Cover:SUS304

Function :

- 1.DC Heating Boils Water To 100°C (≈1.5 Cycles)
- 2.DC Mode Warms Milk In 3min
- 3.±1 ° C Precise Temperature Control (37°C -55°C) And 5 Quick-select Gears

Capacity	AC /DC Power	Battery Capacity	Product Size (mm)	N.W. (kg)	G.W. (kg)
0.55L	14.8V 120W	16000mAh	Φ90x270mm	0.8	0.9

XP-W17C-D



Mode :
DC Warms To 55°C

Material :
Inside:SUS316
Outside:SUS304
Lid Cover:Food - Grade PP

Function :
1.DC Warms To 55°C
2.±1 ° C Precise Temperature Control
(37°C -55°C)

Capacity	DC Power	Battery Capacity	Product Size (mm)	N.W. (kg)	G.W. (kg)
0.5L	14.8V 75W	10400mAh	Φ90x257mm	0.8	0.9

Flip Lid Lock

Safety Lock To Prevent Accidental Opening
And Leakage, Scalding



Child Safety Lock



Dry Burn Protection



Smart Battery Display



SGS CE FDA



Foshan Nanhai Jetway Import and Export Co., Ltd.
佛山市南海区捷维进出口有限公司